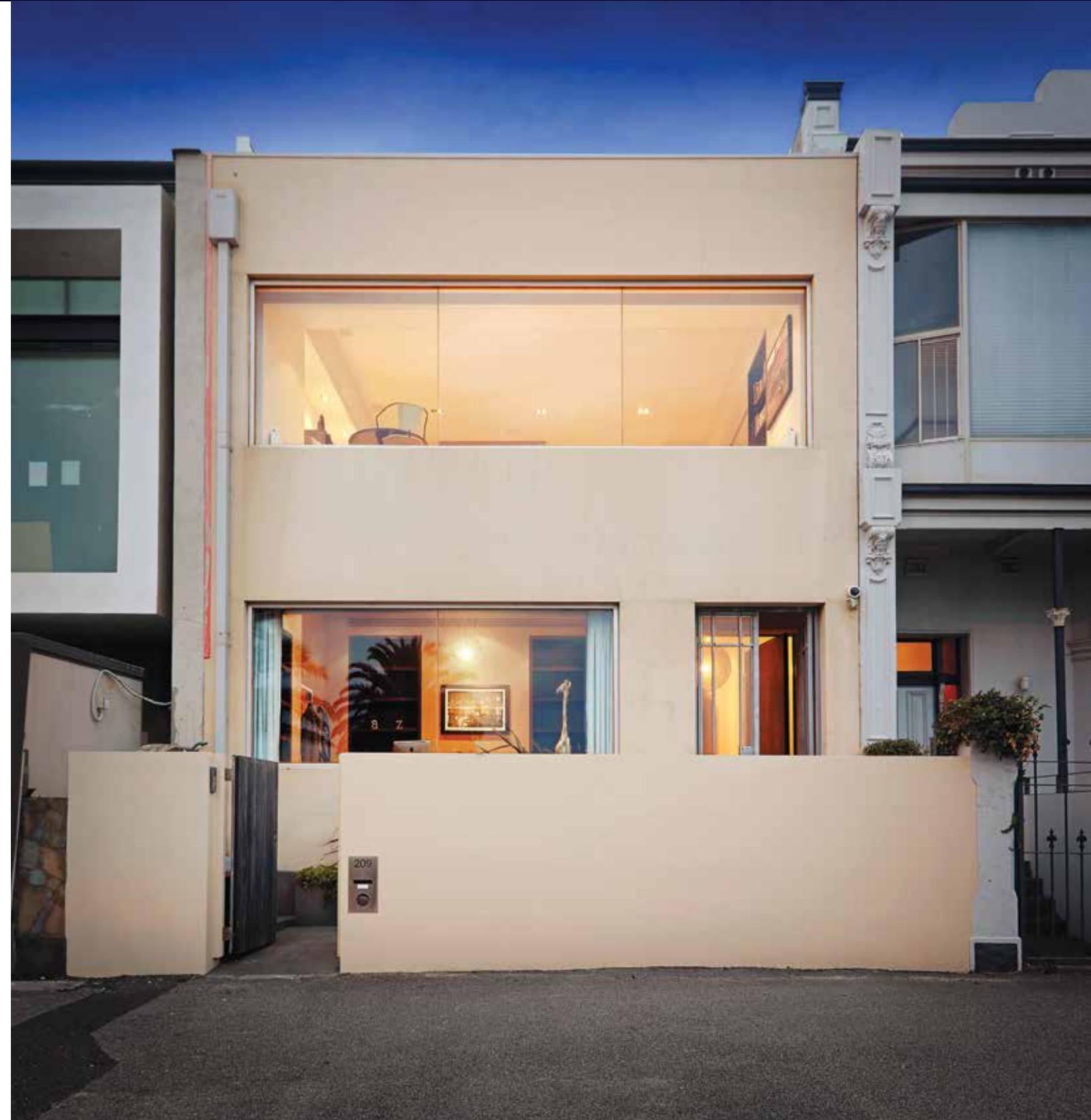
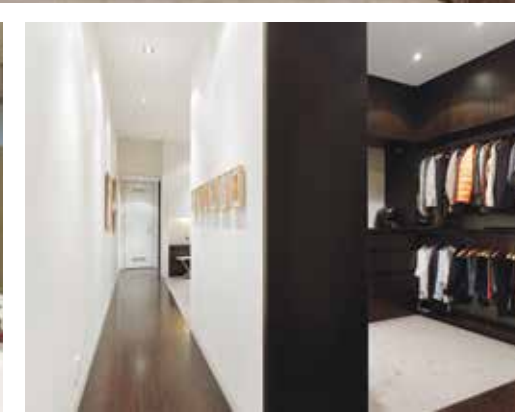
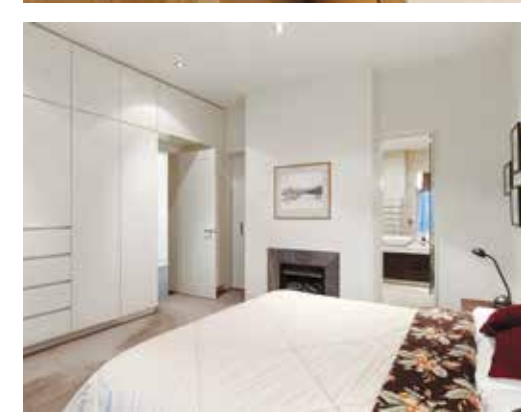
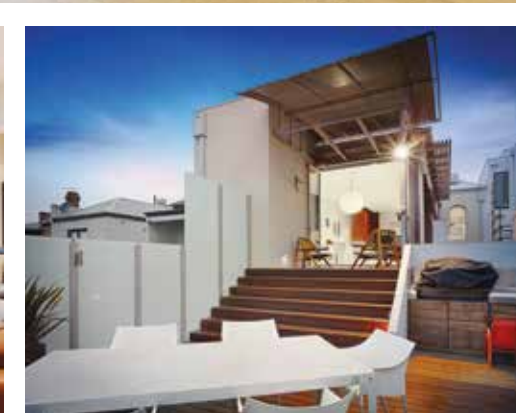
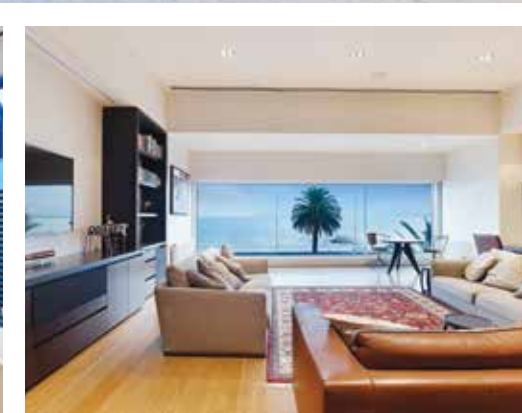
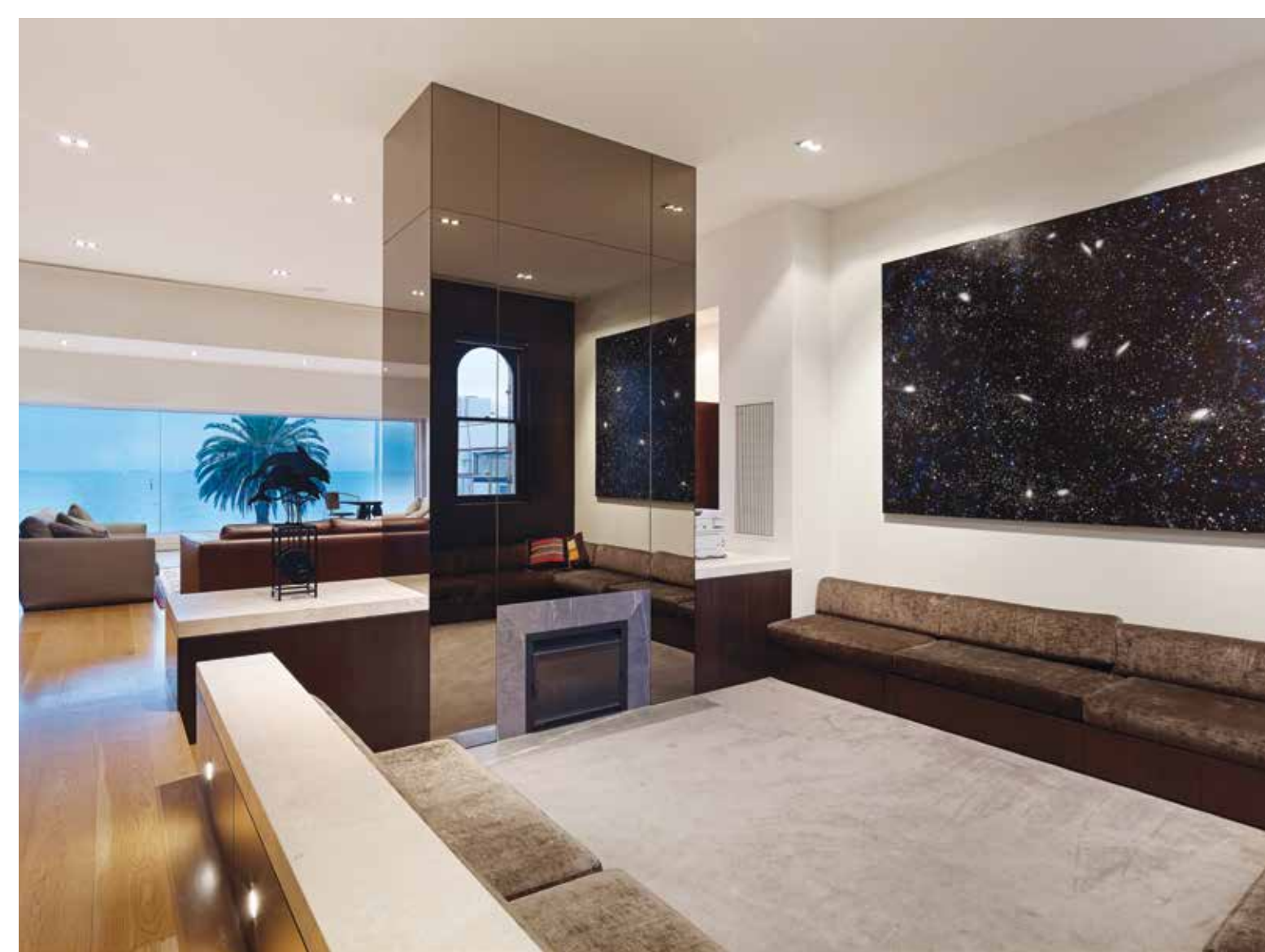


Interactive Floorplan





BEACHFRONT MAGNIFICENCE

- Exceptional residence in dream location offering the very finest in living and lifestyle
- Bespoke finishes throughout
- Architect designed two storey home of generous proportions.

Comprising: Upstairs multiple living zones, absolute waterfront living, sunken lounge, large open plan kitchen, adjoining dining merge seamlessly together to capture both city and water views. Sunny northerly terrace for outdoor living. Two oversized bedrooms that open to a decked terrace each with walk-in

robes and ensuites, a third bedroom or office and purpose utility room.

Features: An internal lift, double garage from Ashworth Street, timber flooring and cabinetry throughout, stone finishes, high ceilings, open fireplaces, cbus system and climate control.

	3 2 2	
Auction	Sunday 30 April at 1pm (if not sold prior)	
Inspection	As advertised or by appointment	
Contact	Michael Szulc	0417 122 809
	Geoff Cayzer	9690 9782
MeI Ref	57 F6	